

420PEOPLE

contemporary dance

THE WATCHER (60min.)

Choreography: Václav Kuneš and dancers

Music: Please the Trees

Cast: 420PEOPLE – Francesca Maria Amante, Fanny Barrouquère, Simona Machovičová, Veronika Tókóly, Filip Staněk and Please the Trees – Václav Havelka, Jan Svačina, Kryštof Křížek

Light design: Jan Mičoch

Costumes: Olo Křížová

Set design: Hynek Dřížhal

Premiere: September 11 and 12, 2018, La Fabrika, Prague, Czech Republic

Technical rider

1) Stage:

stage size - min. 10 x 10m

black dance floor covering the entire stage (if possible, please put mirelon under)

black backdrop (alternative solution upon consultation)

provided by the organizer

On stage (arranged by 420PEOPLE) :

window blind (width 2.4m / height 4.7m) - placed in front of the band, power supply required + 20m cabel with device control

stripes consoles (8pcs) always hanged on two hooks - the number of consoles used depends on the width of the stage, the position on the horizon + one console placed on the right side

black shiny dance floor in the shape of ▲ placed on the left side of the stage to frame the space for band



2) Lights (provided by organizer):

5X par64 CP61 nsp

15X par64 CP62 mfl

8X FRESNEL 1000W

4X 25-50° Source Four Zoom

2X 36° Source Four 5X PC 1000W

2X 25-50° Source Four J

2X LED PAR ELATION SIXPAR 300

4X ELATION PLATINUM SEVEN WASH

6X ELATION SATURA SPOT CMY

13X Barndoor

6X floorstand

1x DMX controlled hazer

also specified in the lighting plot below

3) Sound (provided by organizer):

A/ PA system

Professional stereo PA system with appropriate subs min. 15W/1p in the audience (calculated from the capacity of the venue)

B/ FOH mix analog: min. 24/8/2 (+48V, Low cut, 4x param EQ, insert), min. 4x AUX pre + 2x AUX

post) pref. Soundcraft, Allen Heath siderack: 4x gate 6x comp 2x multi FX 1x tap (!) delay - TC,

Roland 1x FOH stereo EQ min. 4ch 1/3 oct EQ for monitors

or similar professional digital mixing board including all we need (pref. Soundcraft, Allen Heath, we do NOT accept Behringer, PreSonus)

C/ Monitors

min. 3x professional bi-amp monitor in 3 separate ways!

D/ Input List

Ch	Instrument	Pref. mics	Insert	FX
1	Kick	D112, D12, D6, B52	Gate, comp	
2	Snare bottom	sm57, i5	comp	drum plate
3	Snare top	sm57, i5	Gate, comp	drum plate
4	Hi hat	C451, AT2031	Gate	
5	Tom	sm57, D2	Comp, gate	drum plate
6	Floor Tom	B52, D12, Re20	Comp	drum plate
7	Floor Tom 2	B52, D12, Re20		drum plate
8	OH - L	C1000, NT5, P-120		
9	OH - R	C1000, NT5, P-120		
10	Synth 1	DI		
11	Synth 2	DI		
12	El. Guitar	sm57		
13	El. Guitar	sm57		
14	Vocal !!Extra long cable - min. 20m!!	Bd69	comp	Hall, Echo, Delay (tap!)
15	Vocal 2	SM 58 or similar	comp	Hall Echo, Delay (tap!)

4) Crew

Number of people travelling: 11

ARTISTS: 8 (5 dancers, 3 musicians) + choreographer if possible

TECHNICAL TEAM: 3 (1 sound technician, 1 light technician, 1 production manager)

Provided by organizer:

3 riggers

2 light technicians

1 local sound technician

5) Schedule and other requirements

If the show starts at 8pm or later it is possible to set up the show in one day. It always depends on the agreement with the organizer.

The day before the show

transport of the stage set

preparation of the dance floor and the stage set

The day of the show

from 09:00

technical set up

from 13:00

construction of drums and music set up, sound check

15:30

warm up dancers on stage

16:30 - 18:00

general

19:30, or 20:00

show (60 min)

Transport of the crew and the set to be covered by the organizer.

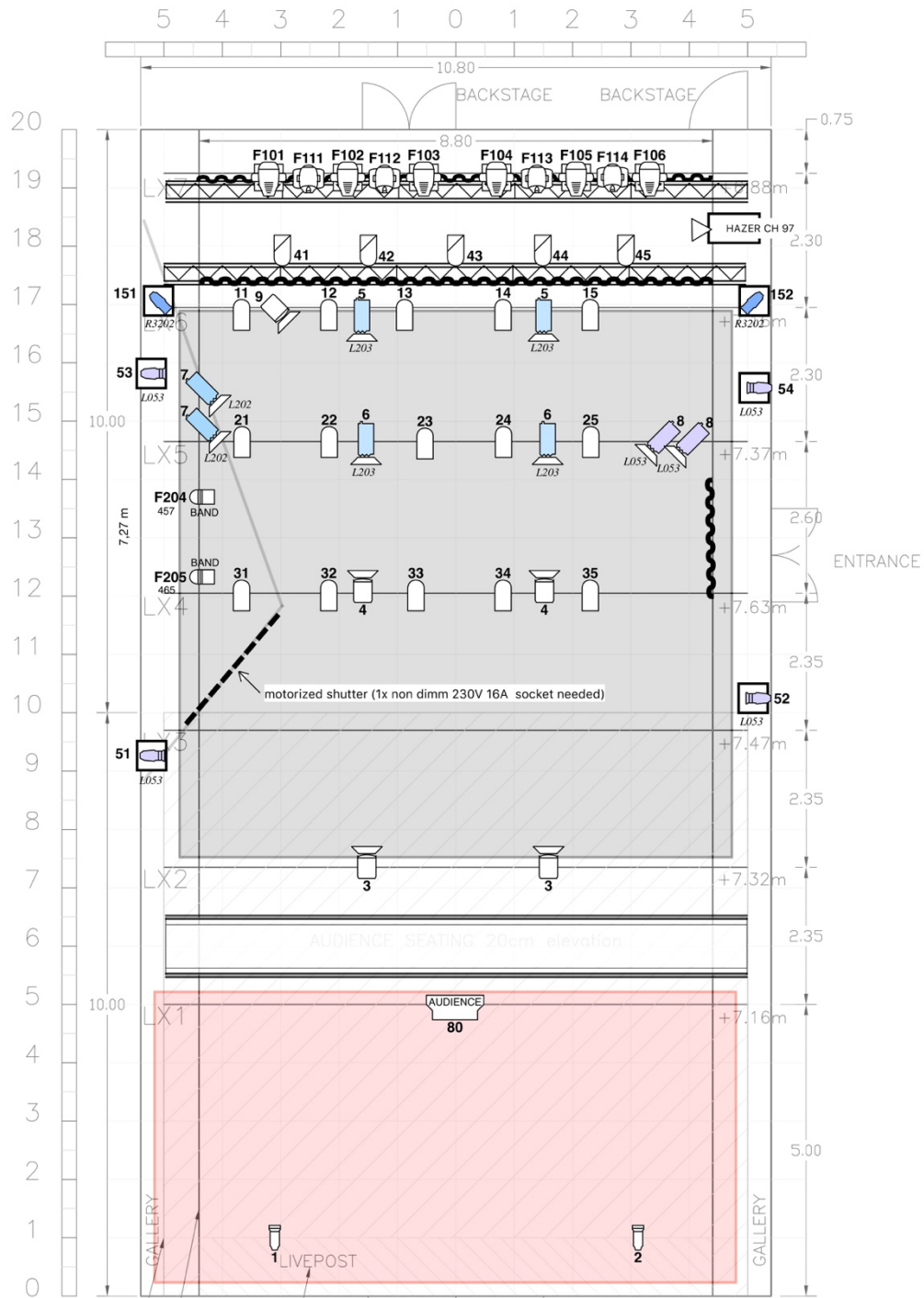
2-3 heated dressing rooms with mirrors, shower and kettle required.

Tea and coffee would be heartwarming.

Contact:

Marta Lajnerová, marta@420people.org, +420 602 666 592





420 PEOPLE & PLEASE THE TREES

THE WATCHER

ENTRANCE FROM STREET

LIGHT PLOT

Venue: LA FABRIKA - STUDIO 1

Designer: JAN MLČOCH
antonaut@volny.cz

11_09_2018

- | | | |
|----------------------|--------------------------------|-------------------------------|
| 2X 36° Source Four | 8X FERSNEL 1000W | 4X 25-50° Source Four Zoom |
| 5X PC 1000W | 2X 25-50° Source Four J | 2X LED PAR ELATION SIXPAR 300 |
| 5X par64 CP61 nsp | 4X ELATION PLATINUM SEVEN WASH | 13X Barndoor |
| 15X par64 CP62 mfl | 6X ELATION SATURA SPOT CMY | 6X floorstand |
| Color Channel | 1x DMX controlled hazer | |